

SAVE THE DATE



## COMMUNITY ENGAGEMENT IN PANDEMIC PREVENTION AND ONE HEALTH.



PARTNERS

EANNASO

PREZODE

cirad



# OUR WEBINAR RULES



USE THE  
ELECTRONIC  
HAND TO  
REQUEST FOR A  
CHANCE TO  
SPEAK

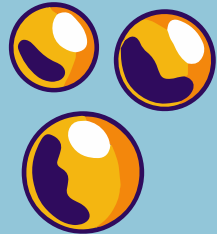


ALWAYS BE ON  
MUTE



RENAME YOUR  
ACCOUNT

HAVE FUN



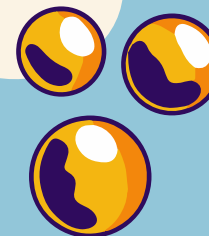
YOU SUBSCRIBED  
HENCE GIVE  
CONSENT TO BE  
RECORDED



USE THE CHAT  
OPTION FOR  
Q&A/COMMENTS



RESPECT EACH  
OTHERS INPUT



NETWORK  
NETWORK  
NETWORK

# Welcome all

Zoom Webinar

# 2024

## TALK ABOUT HEALTH

INSIGHTFUL DISCUSSION

11:00 AM to 12:30 PM EAT  
8th November  
2024

Location  
Zoom  
Virtual  
Webinar

Contact  
[eannaso@eannaso.org](mailto:eannaso@eannaso.org)

### Our speaker



MARISA PEYRE  
*Deputy Director of ASTRE  
Cirad*



BERNARD BETT  
*Team Lead  
ILRI*



MUSSO MUNYEME  
*Veterinarian, researcher, and lecturer  
University of Zambia*



ALEXANDRE CARON  
*Researcher  
Cirad*

### Pandemic Prevention and One Health

*What is the role of CSOs and Communities*



**PREVENTING ZOOONOTIC DISEASE EMERGENCE**

**Fighting Pandemic Risks on the Ground**

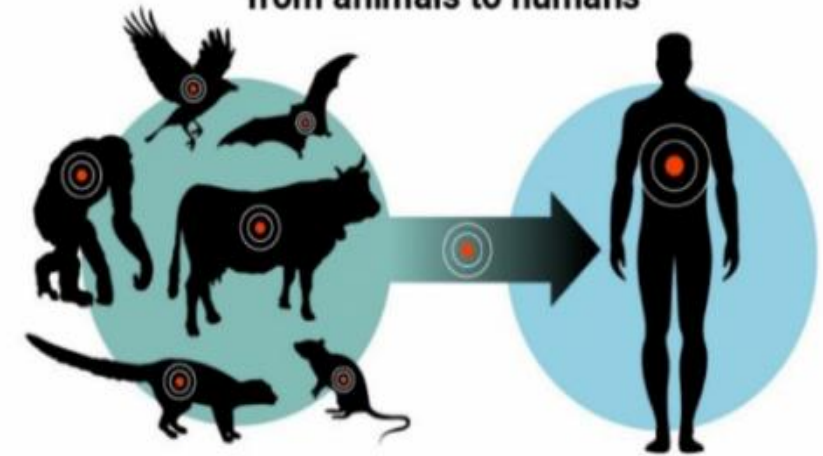
# TODAY THE VAST MAJORITY OF INFECTIOUS DISEASES ARE OF ANIMAL ORIGIN

Zoonoses are diseases transmitted from animals to humans. Human activities, climate change and the destruction of animal habitats – that bring wildlife, animals and humans into close contact – have exacerbated their emergence.



## What are zoonoses and how prevalent are they?

Zoonoses are diseases transmitted from animals to humans



They  
comprise:

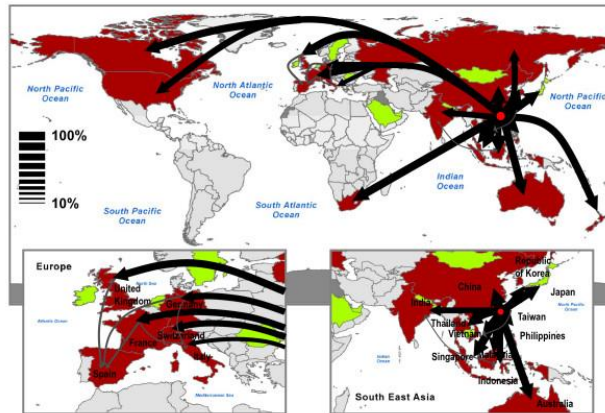
**60%**  
of all infectious  
diseases in humans

**75%**  
of all emerging  
infectious diseases

Source:  
UNEP Frontiers 2016 Report

#COVID19

## 2003: SARS pandemic spread



Source: Colizza et al, 2007 BMC Medicine

## 2009: H1N1 pandemic spread

H1N1 global invasion by air travel (March - mid May)

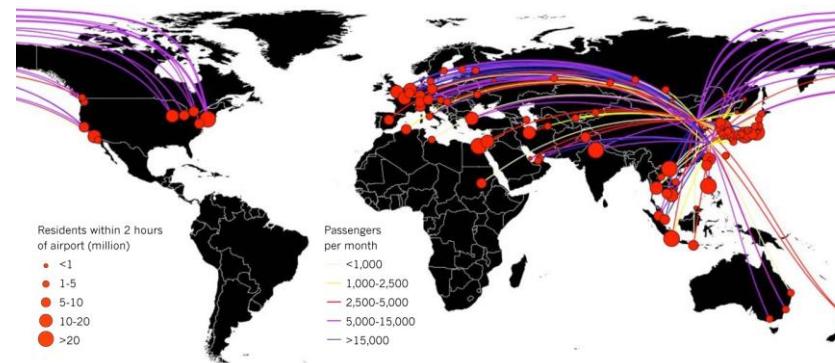


## Ebola spread 2013-2014



Marcelo et al. PLOS Current Outbreaks, Sep 2 2014

## Avian Influenza (H7N9) pandemic risk

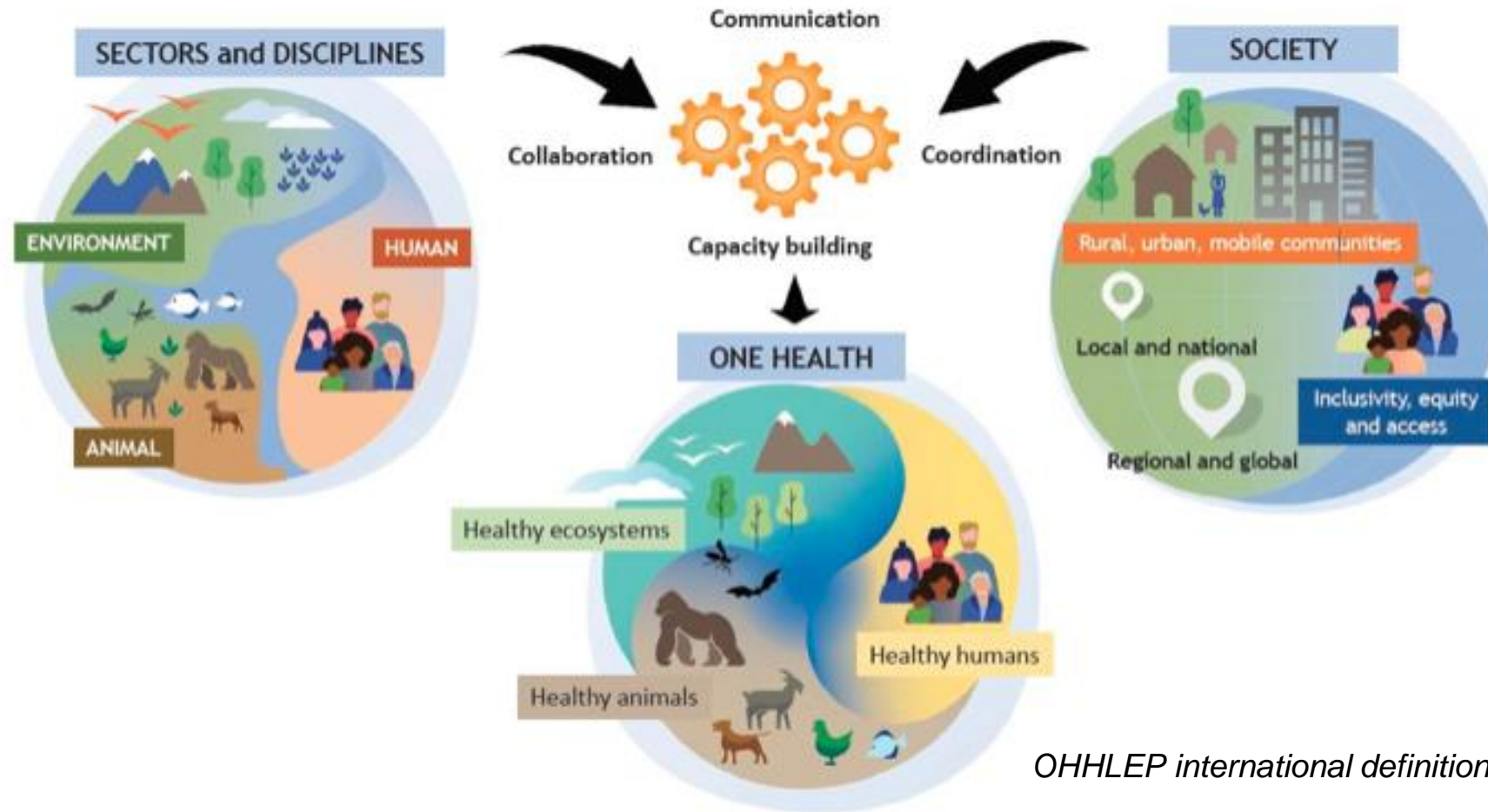


Source: Buttler D, Nature News 2013

# COVID 19 PANDEMIC – >15 million deaths



# ONE HEALTH REQUIRES A BOTTOM-UP APPROACH



Work together to PREVENT PANDEMICS, while ensuring food security and livelihoods for the poorest communities



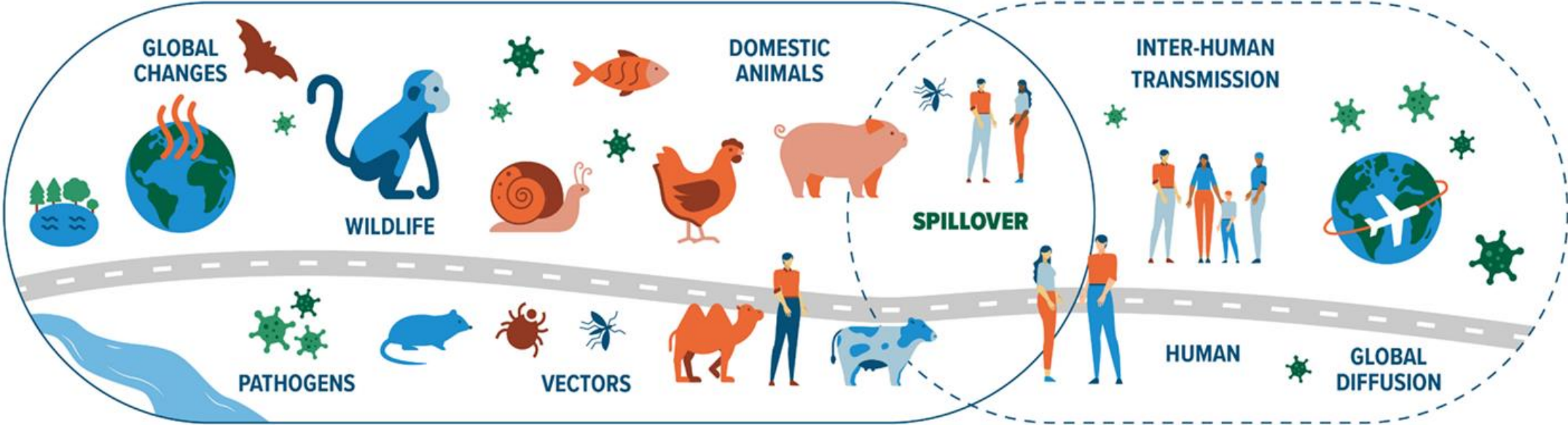
# COMMUNITIES ARE AT THE FOREFRONT OF PANDEMIC PREVENTION



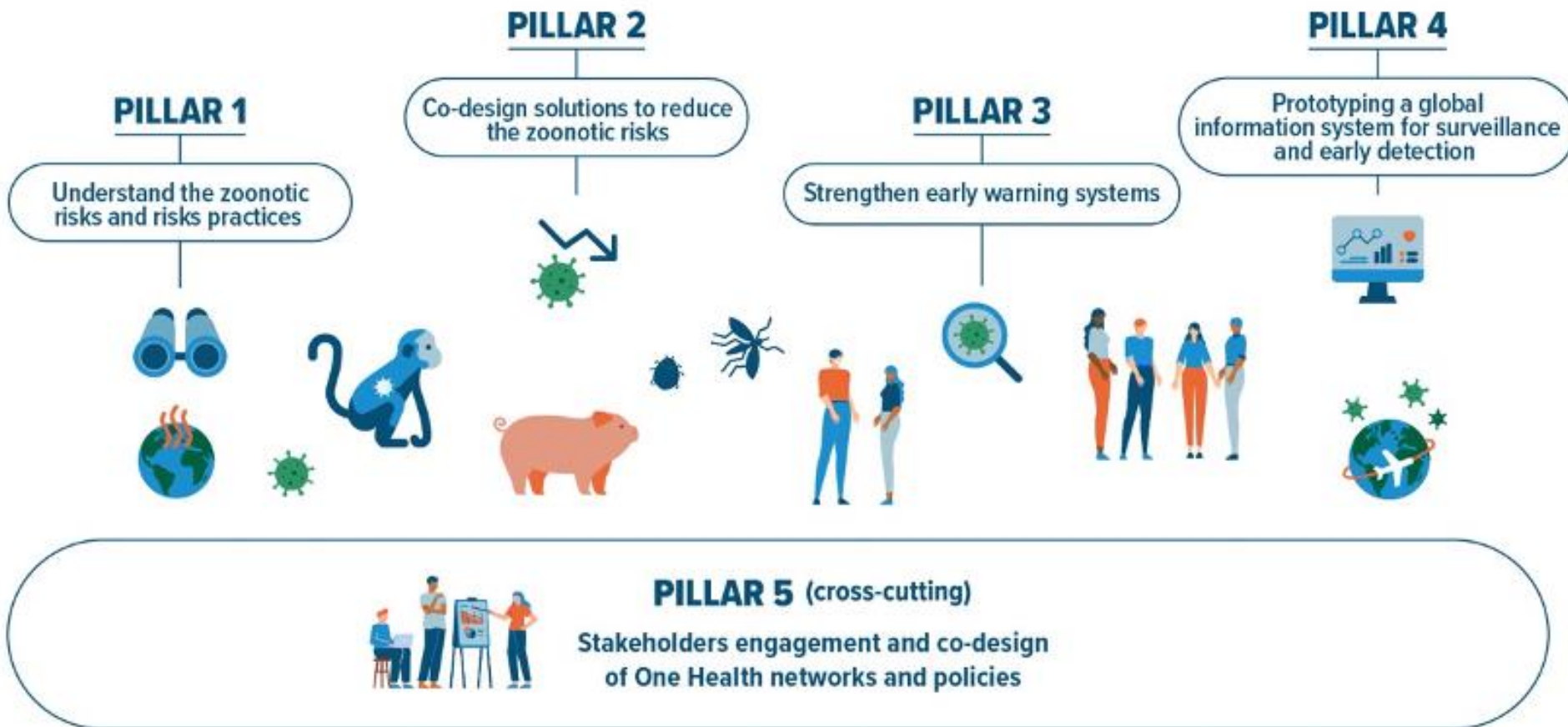
[Video on community-based surveillance](#)

# PREZODE SCOPE

## PREZODE



# PREZODE FRAMEWORK



# PREZODE – Preventing human diseases of animal origin



presentation of PREZODE, and 2023 achievements

Copier le li...

**ENVIRONMENT**

**ANIMAL**

**HUMAN**

Regarder sur  YouTube

[PREZODE video](#)

# PREZODE AIMS



**A common scientific framework to implement and coordinate** research projects, surveillance systems, operational projects to maximize their impact



**A platform for data sharing**



**A resource center for decision-making,** to support evidence-based policies and reduce the risk of emerging zoonoses

**PREZODE scientific and operational agenda has been co-designed according to a very participatory approach involving civil society, communities and other key actors**

# PREZODE MEMBERS

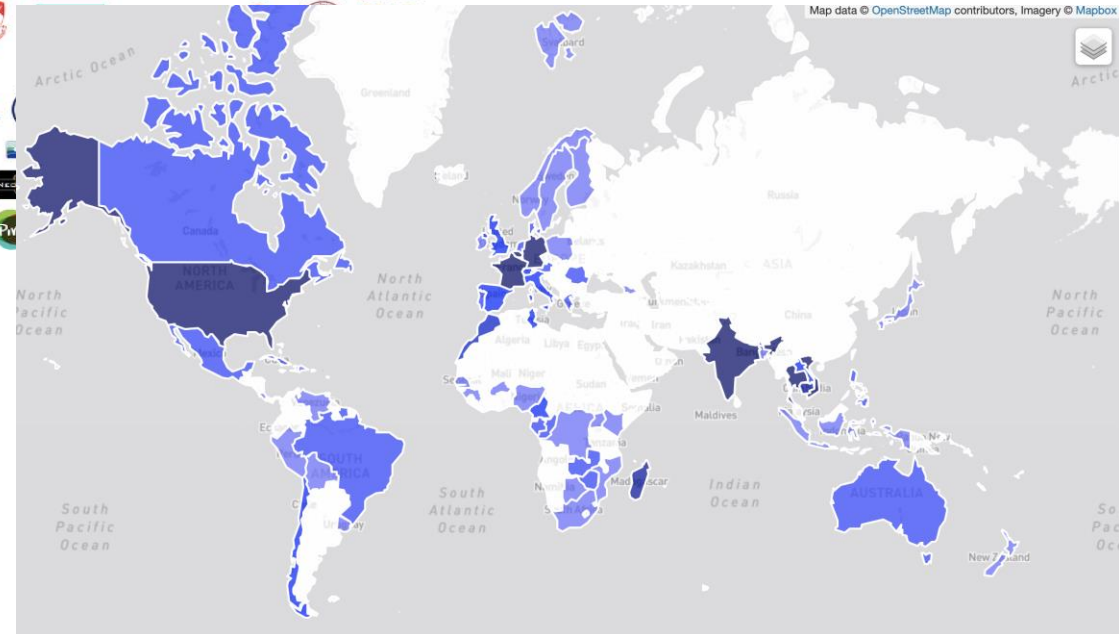
27 Member countries and  
2 Overseas territories



>220 Members (non exhaustive list below)



>80 countries  
represented

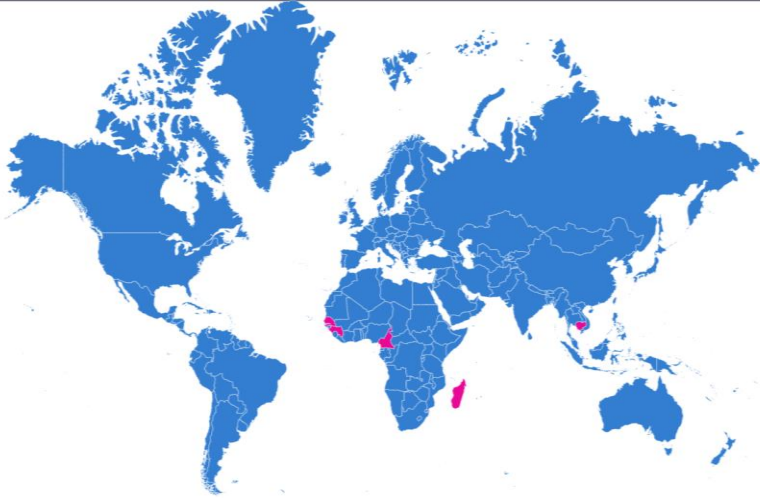




# PREZODE IN THE FIELD

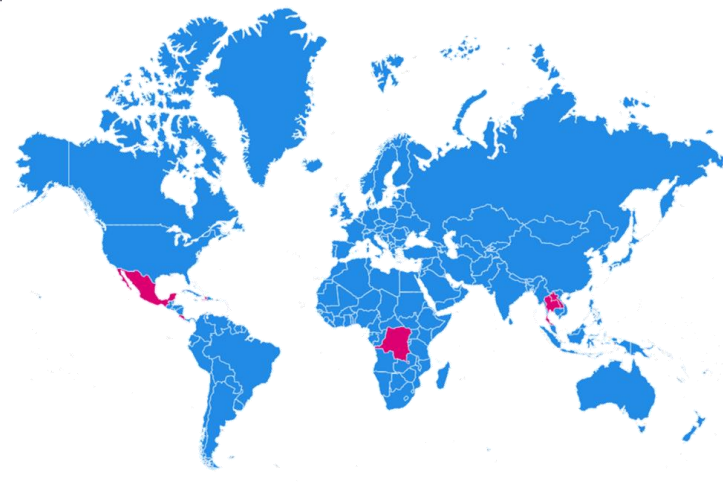


PREZODE in action  
in the global South



Phase 1 AFRICAM – 2023-2026

Cameroun, Guinea, Madagascar,  
Senegal, Cambodia



PHASE 2 – 2024-2027

DRC, Laos, Thaïland  
Mexico, Haïti & Costa Rica



Phase 3 – 2025-2029

*2024 = Co-design phase*  
Mozambique, Tanzania,  
Zimbabwe, South African OH  
networks (COHESA), etc.

Let's hear now a country case in the region



# VIDEO

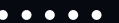
## PRESENTATION

### PANDEMIC PREVENTION & ONE HEALTH

<https://www.youtube.com/watch?v=ojFRoIA13ho>

[https://www.youtube.com/watch?v=h5XD7Rg\\_g6l](https://www.youtube.com/watch?v=h5XD7Rg_g6l)

2024







Q & A



TIME

DON'T BE SHY



# Using the One health approach to enhance Rift Valley surveillance and control

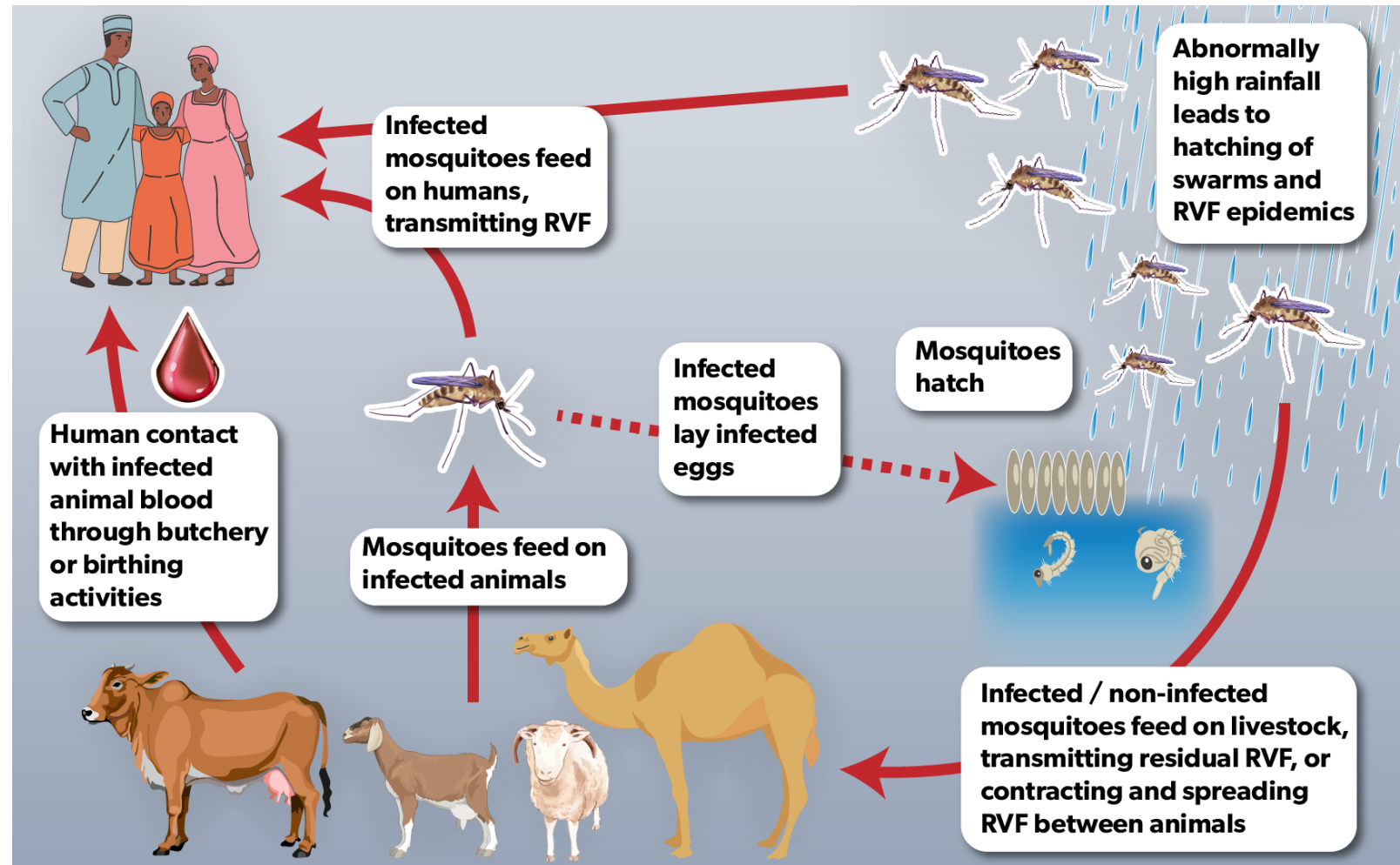
---

Bernard Bett  
International Livestock Research Institute



# Introduction

- Rift Valley fever – mosquito-borne viral disease of livestock and humans
- Outbreaks -- associated with above-normal, persistent rainfall and flooding
- Severe socio-economic losses



Credit: Annabel Slater (ILRI)

# Applications of One Health in Rift Valley Fever research, surveillance and control

- Gain deeper understanding on factors that cause the disease and how it spreads
- Enhance efficiency and effectiveness of surveillance and control measures
- Development and application of the disease control policy

# Building capacity for community-based Rift Valley fever surveillance

- Materials for training community health promoters, community disease reporters and pastoralists
- Case-definitions for Rift Valley fever in animals and humans
- WhatsApp groups for reporting



Community training [Geoffrey Njenga/ILRI]

# How to improve access to livestock vaccines for controlling Rift Valley fever

- Vaccination of livestock against Rift Valley fever offers multiple benefits – e.g. reduced risk to humans
- Barriers to vaccine uptake – gender, safety of vaccine, cost



Livestock vaccination to control Rift Valley fever [Zoe Campbell/ILRI]

## New perspectives

- Explore practical interventions from the environment sector for controlling the disease (Nature-based solutions)
- Benefit/cost assessments



Q & A



TIME

DON'T BE SHY





# One Health in Zambia: *Engaging communities to fight Anthrax in Zambia*

8<sup>th</sup> November 2024

University of Zambia,  
Lusaka

---

Musso Munyeme

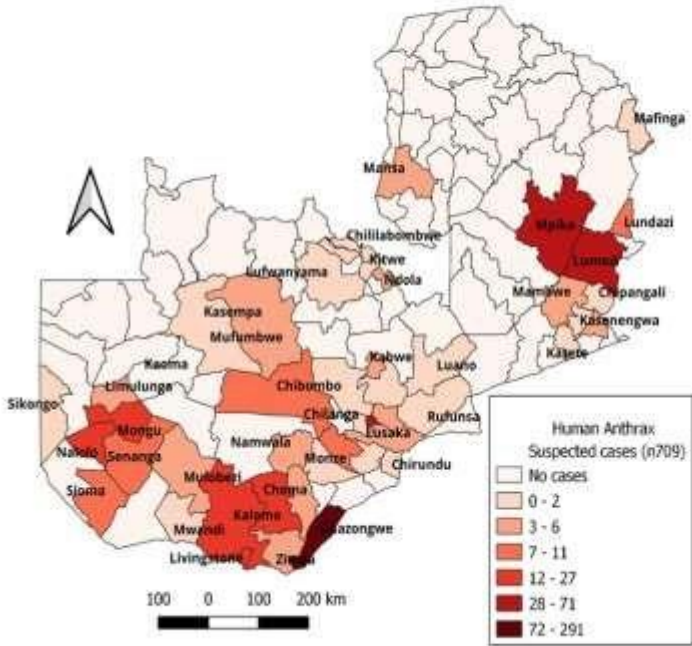


# CONTEXT

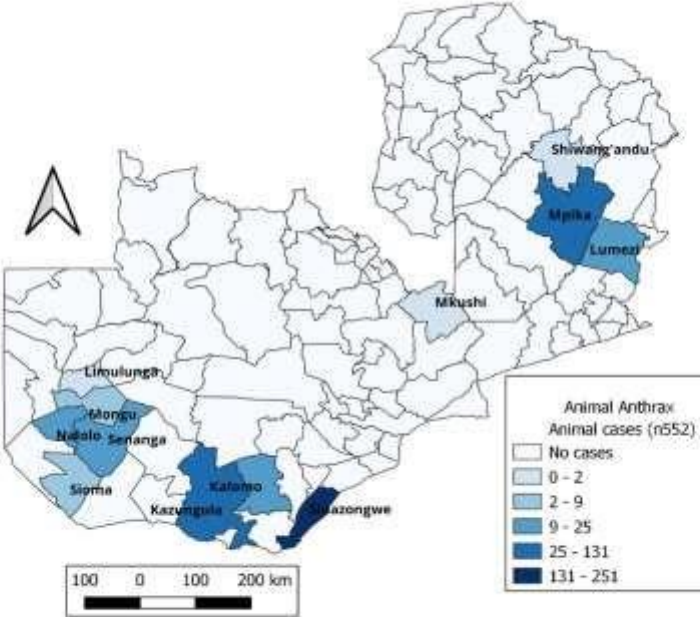
- Anthrax is an endemic disease in Zambia. However, whenever it occurs it leaves behind serious public health issues.
- Last year, 2023, a large scale outbreak occurred in both animals & humans.
- By end of the year in 2023, over >700 human cases in 9 out of 10 Provinces of Zambia.
- However, only 3 out of the 10 Provinces had animal cases [domestic & wildlife]

# 2023 HUMAN & ANIMAL ANTHRAX OUTBREAKS

2023 – Human Cases – Lag effect-1-2 months



2023 – Animal Cases [occurred way before human cases]



# Pictorial evidence of the 2023 Anthrax outbreak



## One Health & Community response

- Response to anthrax was fast where One Health approach was known.
- However where One Health was not practised, response was late [*This was the major source of the “Human outbreaks that spiralled out of control across the Country”*].
- Community member response: *“In our village, we suffered several cattle deaths, ...we ate the meat, not knowing the disease could also affect us.....it was the same disease causing the skin disease .....a lot of people dried the meat & sold it in towns,”*
- The above scenarios indicated the serious need for adoption of a **One Health locally integrated systems thinking approach** for the local community, **capacity building, community based surveillance**, introduction of **community intelligence groups** for rapid response.

# Community Engagement during Anthrax Outbreaks

## **RURAL PARTICIPATORY GOVERNANCE**

The One Health teams involved the community from decision making to implementation of community based monitoring of the anthrax outbreak as well as in applying control programs.

## **STRENGTHENING COMMUNITIES**

The capacities of local actors were identified to respond to the anthrax outbreaks and raise awareness.

## **LOCAL ADAPTATION & OWNERSHIP**

Local actors learned how to promptly implement infection prevention and control measures in an anthrax outbreak instead of waiting for outside help.

## **LOCAL RESPONSE MECHANISMS**

Effective implementation of strategies was encouraged, to prepare, detect, prevent and respond to anthrax outbreaks.



**ELECTRONIC MEDIA - TV/RADIO** wider community engagement



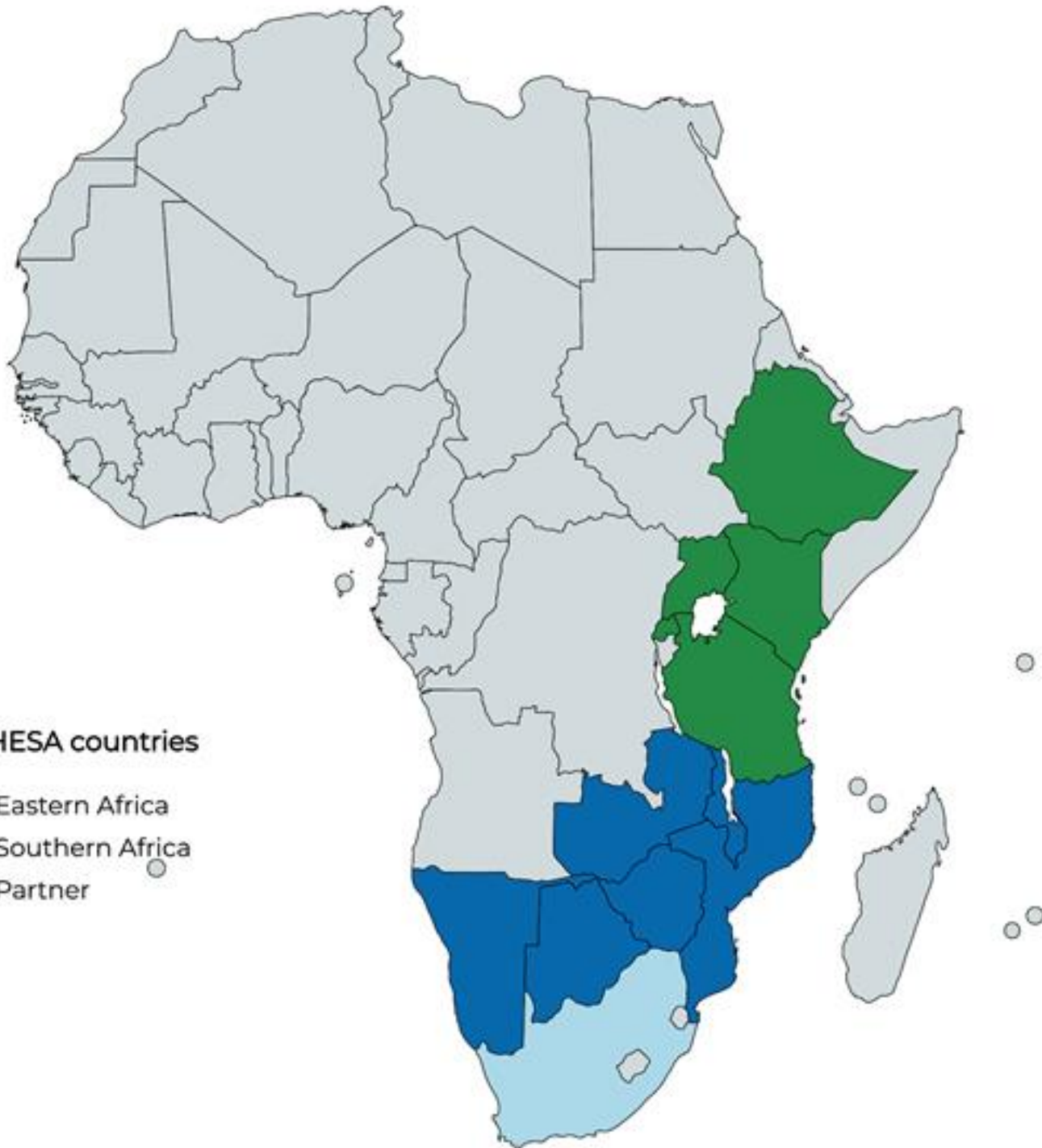
**PHYSICAL:** community engagement in affected sites/hotspots



**ONE HEALTH:** Zambia National Public Health Institute brings all partners including community



**MULTI-SECTORAL:** partner involvement in Anthrax response-Zambia



COHESA countries

- Eastern Africa
- Southern Africa
- Partner



THANK YOU





Q & A



TIME

DON'T BE SHY

